

Vicious
Wolves and
Silly Dogs



Laketon Bethel Church

April 28, 2024

Dr. Sherwin Brantsen

Sherwin's Ten Reasons for Going to Church Every Sunday

1. Renew

Everyone goes through times where enthusiasm for life melts away. We all have times where our faith diminishes. Worship on Sunday renews faith and energizes attitudes for all of life.

2. Laugh

Yes. We laugh. Humor is a valuable part of worship. Most of it is unplanned. Sherwin's brother told him years ago that: "People aren't laughing at you because you're funny, they are laughing because you are so stupid..."

3. Pray

Face it. You don't pray much. Church services remind you of the importance of prayer. They jump start your prayer life. You learn more about prayer. When your family is with you, they see you praying and that is an example that changes lives.

4. Sing

Songs of faith can move mountains of despair. You probably won't like all the songs. But some of them will change your life.

5. Help

You will often find ways to help in your community. When you help, it reduces inherent narcissism. You think less of yourself and more of others. You become more grateful for what you have. You become a better person and a happier one.

6. Give

Yes. Put in some money. Do something with your cash for God instead of for yourself. Don't expect anything back and you will be surprised at how blessed you are. We all waste money. Here you have an opportunity to do something positive with it.

7. Meet

Connect with other people. Laketon Bethel accepts everyone, including you. Many friendships are made on a regular basis. We have great coffee and cookies, which help in all sorts of discussions.

8. Learn

The guy up front is trained and experienced and often knows what he is talking about. You will learn something every Sunday.

9. Grow

When you put what you learn into practice, you will find positive changes in your life. You will have unstoppable growth in ways you don't always expect.

10. Jesus

The church exists because of Jesus. When you participate in it regularly, he is pleased. One day you will meet him face-to-face. If you regularly connect with him through weekly worship services, that meeting will be happy.

Order of Worship-9:00am

Gathering Song

“Glory to His Name”

Call to Worship

“Glorious Is Thy Name”

“In the Name of the Lord”

“O For a Thousand Tongues to Sing”

Welcome & Announcements

Congregational Prayer

Worship in Song

“Wonderful Words of Life”

“Wonderful Story of Love”

Crosstalk - “Vicious Wolves and Silly Puppies”

Offering

“Jesus, Your Name”

Benediction

“God Be With You”



Order of Worship-11:00am

Gathering Song

“That’s My King”

Call to Worship

“This Is Our God”

Welcome & Announcements

Congregational Prayer

Worship in Song

“Lord, I Need You”

“This Is Amazing Grace”

Crosstalk - “Vicious Wolves and Silly Puppies”

Offering

“There Was Jesus”

Benediction

“God Be With You”

Announcements

Mother's Day Special On Sunday, May 12th, we are celebrating Mother's Day by offering a variety of delicious donuts to be served after both services. Be sure to invite the special women in your life for this show of appreciation and honor.

Pickle Ball All are welcome to join a fun night of pickle ball on Wednesdays at 7:00pm in the gym.

Ladies Mark Your Calendar for a Mother/Daughter Banquet

The banquet is on May 10th at 6:00pm here at Laketon Bethel.

Tickets are \$10 each and will go on sale Sunday April 7th.

You will need to choose between ham and chicken when you purchase your tickets. No tickets will be sold without the choice being made for each person attending.

Bring your mother, daughter, sister and/or friend and be prepared for a good time!

Any questions contact Lorri Anderson 231-740-3292 or Maureen Mussman 231-894-8010

Service Opportunities

Nursery Help We are in need of volunteers for our second service Nursery. This service opportunity begins at 10:45am until the service is over and kids are picked up. If interested, please sign up on the sheet provided in the entryway or see Sally Hendrixon or call the office.

Christian Care Laketon Bethel was part of starting Christian Care over 100 years ago. They are unfortunately going through hardships and are looking into selling. The latest information on Christian Care is on the table in the entryway. If you have any questions or would like to help please contact Mia Fick at 720-8506.

Volunteers

1st Service Coffee Server: Diane Brantsen

2nd Service Coffee Server: Colby Beckstrom & Kelly Andry

1st Service Nursery: Connie Reahm

2nd Service Nursery: Pat Ritsema & Cyndie Bingaman

Children & Youth News



LBC Children's Church

All kids in grades Prek-Kindergarten & 1st-5th are welcome to join our Children's Church during the second service. We have lots of fun learning about the love of Jesus. If you have any questions, please see Jackie Ritsema or Mia Fick.

Laketon Bethel Youth Group

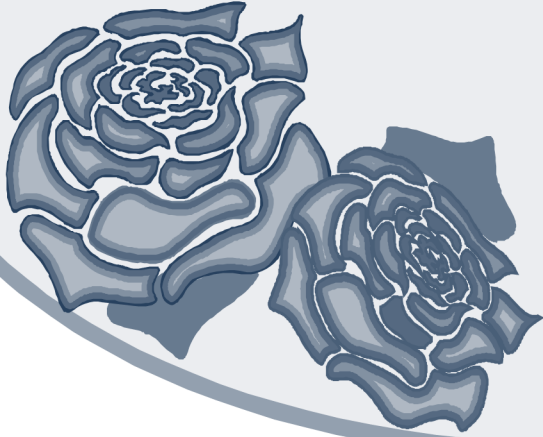


All youth in 6th-12th grades are welcomed to join us on Sunday, April 28th from 5:00-7:00pm for dinner, a lesson, and lots of fun.

For any questions, please see John or Ashley Wierenga.

Special Senior of the Week:

*Please show your support by signing the cards located
on the table in the entryway.*



**Larry
Cone**

*Please remember in prayer our friends who are
battling long-term illnesses:*

Donald Bayne

Jana Belladone

Betty Bonneville

Larry Budreau

Patti Buurma

Craig Carlson

Amanda Cihak

Larry Cone

Amy Fredericks

Jacob Geers

Bob Hanson

Scott Hladki

Sally Legard

Avery Lynn

J.T. Maskell

Tom McKee Sr.

Patti Mercer

Paul Ortquist

Lynn Pluger

Shirly Pummell

Aaron Rop

Gary Samples

Joe Shavalier

Larry Shavaler

Ida Shealy

Sandy Streeter

Kathy Tabor

Inga Weavers

Marv Wegner

Acts 20 – New Living Translation

²⁹ I know that false teachers, like vicious wolves, will come in among you after I leave, not sparing the flock.

1 John 4 – The Message

4 My dear friends, don't believe everything you hear. Carefully weigh and examine what people tell you. Not everyone who talks about God comes from God. There are a lot of lying preachers loose in the world.

²⁻³ Here's how you test for the genuine Spirit of God. Everyone who confesses openly his faith in Jesus Christ—the Son of God, who came as an actual flesh-and-blood person—comes from God and belongs to God. And everyone who refuses to confess faith in Jesus has nothing in common with God. This is the spirit of antichrist that you heard was coming. Well, here it is, sooner than we thought!

1 John 4, continued from the New Living Translation

4 But you belong to God, my dear children. You have already won a victory over those people, because the Spirit who lives in you is greater than the spirit who lives in the world. **5** Those people belong to this world, so they speak from the world's viewpoint, and the world listens to them. **6** But we belong to God, and those who know God listen to us. If they do not belong to God, they do not listen to us. That is how we know if someone has the Spirit of truth or the spirit of deception.

7 Dear friends, let us continue to love one another, for love comes from God. Anyone who loves is a child of God and knows God. **8** But anyone who does not love does not know God, for God is love.

Deep Sheet

[a place for your notes]

Why do you suppose false teachers go into ministry?

How can you protect yourself and your church from them?

How do you spot a false teacher?

How can you spot the real thing?

Other Notes:

April/May Weekly Bible Readings

Date	Day	New Testament	<input checked="" type="checkbox"/>	Special Prayer	Old Testament	<input checked="" type="checkbox"/>
28	Su	Matthew 16			Exodus 23	
29	Mo	Matthew 17			Exodus 24	
30	Tu	Matthew 18			Exodus 25	
01	We	Matthew 19			Exodus 26	
02	Th	Matthew 20			Exodus 27	
03	Fr	Matthew 21			Exodus 28	
04	Sa	Matthew 22			Exodus 29	
05	Su	Matthew 23			Exodus 30	

LAKETON BETHEL REFORMED CHURCH

1568 W. Giles Rd. Muskegon, Mi. 49445

Ph. #744-1749 Fax #744-2848

Website address: laketonbethel.org & e-mail: lbrcoffice@gmail.com

Office hours: 8:30 am – 11:30 am: Tuesday, Wednesday, Thursday, & Friday

Pastor – Dr. Sherwin Brantsen (drbrantsen@gmail.com)

Director of Operations – Gary Gifford (garygifford4@gmail.com)

THE PURPOSE OF LAKETON BETHEL:

“To trust steadily in God, hope unswervingly, love extravagantly. And the best of the three is love.”

Laketon Bethel’s Core Values:

A. ACCEPTANCE:

Everyone, regardless of who they are, what they have done, or what they are doing, will be accepted here. Laketon Bethel will be a safe place to explore your relationship with Jesus.

B. BIBLE:

The teachings of Jesus, contained in the Bible, are the final authority for faith and practice. We will study these teachings with open minds and the best scholarship available.

C. CONNECTION:

We invite people to connect with Jesus and with each other in all that we do.

OUR CONSISTORY

Elders

Joel Ortquist, Dave DeBoer, Jeff Hooker,
Mike Lyons, Steve Mussman, Paula Scott-
Stewart, Donna Spytma, Heather Wilke

Deacons

Brent Ackerman, Kristie Hall, Kathy Forrester,
Jill Mouw, Doug Lubbers, Kris Meyers,
Jerry Vos, Diana Wagbo