

# Sherwin’s Ten Reasons for Going to Church Every Sunday

## 1. Renew

Everyone goes through times where enthusiasm for life melts away. We all have times where our faith diminishes. Worship on Sunday renews faith and energizes attitudes for all of life.

## 2. Laugh

Yes. We laugh. Humor is a valuable part of worship. Most of it is unplanned. Sherwin’s brother told him years ago that: “People aren’t laughing at you because you’re funny, they are laughing because you are so stupid...”

## 3. Pray

Face it. You don’t pray much. Church services remind you of the importance of prayer. They jump start your prayer life. You learn more about prayer. When your family is with you, they see you praying and that is an example that changes lives.

## 4. Sing

Songs of faith can move mountains of despair. You probably won’t like all the songs. But some of them will change your life.

## 5. Help

You will often find ways to help in your community. When you help, it reduces inherent narcissism. You think less of yourself and more of others. You become more grateful for what you have. You become a better person and a happier one.

## 6. Give

Yes. Put in some money. Do something with your cash for God instead of for yourself. Don’t expect anything back and you will be surprised at how blessed you are. We all waste money. Here you have an opportunity to do something positive with it.

## 7. Meet

Connect with other people. Laketon Bethel accepts everyone, including you. Many friendships are made on a regular basis. We have great coffee and cookies, which help in all sorts of discussions.

## 8. Learn

The guy up front is trained and experienced and often knows what he is talking about. You will learn something every Sunday.

## 9. Grow

When you put what you learn into practice, you will find positive changes in your life. You will have unstoppable growth in ways you don’t always expect.

## 10. Jesus

The church exists because of Jesus. When you participate in it regularly, he is pleased. One day you will meet him face-to-face. If you regularly connect with him through weekly worship services, that meeting will be happy.

# Deep Sheet

a place for notes

Do you feel much pressure to be perfect?

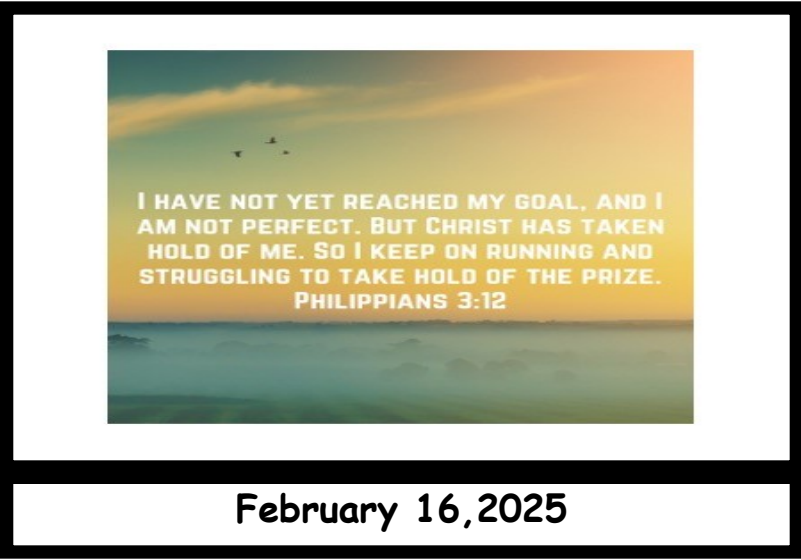
What happens when you admit to imperfection?

Why was Paul no longer driven to impress God?

## Other Notes:

## February Weekly Bible Readings

| Date | Day | New Testament | <input checked="" type="checkbox"/> | Special Prayer | Old Testament   | <input checked="" type="checkbox"/> |
|------|-----|---------------|-------------------------------------|----------------|-----------------|-------------------------------------|
| 16   | Su  | Luke 6        |                                     |                | 1 Chronicles 29 |                                     |
| 17   | Mo  | Luke 7        |                                     |                | 2 Chronicles 1  |                                     |
| 18   | Tu  | Luke 8        |                                     |                | 2 Chronicles 2  |                                     |
| 19   | We  | Luke 9        |                                     |                | 2 Chronicles 3  |                                     |
| 20   | Th  | Luke 10       |                                     |                | 2 Chronicles 4  |                                     |
| 21   | Fr  | Luke 11       |                                     |                | 2 Chronicles 5  |                                     |
| 22   | Sa  | Luke 12       |                                     |                | 2 Chronicles 6  |                                     |
| 23   | Su  | Luke 13       |                                     |                | 2 Chronicles 7  |                                     |



# Laketon Bethel’s Core Values:

## A. ACCEPTANCE:

Everyone, regardless of who they are, what they have done, or what they are doing, will be accepted here. Laketon Bethel will be a safe place to explore your relationship with Jesus.

## B. BIBLE:

The teachings of Jesus, contained in the Bible, are the final authority for faith and practice. We will study these teachings with open minds and the best scholarship available.

## C. CONNECTION:

We invite people to connect with Jesus and with each other in all that we do.

**LAKETON BETHEL CHURCH**  
*1568 W. Giles Rd. Muskegon, Mi. 49445*  
*Ph.#744-1749*  
*Pastor - Dr. Sherwin Brantsen: [drbrantsen@gmail.com](mailto:drbrantsen@gmail.com)*  
*Website address: [laketonbethel.org](http://laketonbethel.org) & e-mail: [lbrcoffice@gmail.com](mailto:lbrcoffice@gmail.com)*

# Questions, Part 2

This is a new adult Bible study based on the questions you have asked. Put these dates on your calendar and hold on to your hat because we will be exploring some of the nitty-gritty topics addressed in Scripture.

## February 19

The Charismatic Gifts Debate: What about speaking in tongues, getting slain in the spirit, getting words of prophecy, etc? Do these things continue in modern days or are they something that ended with the apostolic age? Is your neighbor really speaking in tongues or do they need an increase in medication?

## February 26

The Women in Ministry Debate: Are girls created to serve boys and be submissive? Are we created equal with complimentary roles? Is gender irrelevant for spiritual authority?

## March 5

The Millennium Debate: When will Jesus return? Should I only take short-term investments? Will there be a rapture? Will there be a physical return of Jesus to this earth?

## March 12

This final session will be a potluck with “preacher’s pork” and time to discuss the next Bible Study.

For this session we will talk about “The Hell Debate: Does hell exist?” Does God mandate unending torment of the wicked? Do we simply cease to exist after we die if we reject Jesus?

**Special Senior: Leona Vanderberg**

*Please sign the cards located on the table in the entryway.*

# Announcements

**Membership Class** The Membership Class is today in the Parlor following the Second Service with lunch provided.  
**Family Profile Project** If you would like to participate to have your family highlighted, please pick up the profile form and send a picture and information to Mike Lyons at [lyonsmike61@gmail.com](mailto:lyonsmike61@gmail.com).

**Jr. & Sr. High Youth Group** We will have a Lock-in/ Winter Adventure Saturday, March 1<sup>st</sup> at noon and ending on Sunday, March 2<sup>nd</sup> at 10:00am. For any questions, please see John or Ashley Wierenga.  
**Jr. High J.A.M.** Students in grades 6<sup>th</sup> and up are welcome to enjoy a lesson during the Crosstalk the 2<sup>nd</sup> and 4<sup>th</sup> Sundays. We started a new study that’s focused on answering the question Jesus asked his disciples: “Who do you say that I am?” Our Jr. High JAM group will also get together during our time to support Hand2Hand.  
**Women’s Divorce Group** We’re offering a women’s support group one Wednesday a month at 6:30pm at Park Meadows. The next one will be this Wednesday, February 19<sup>th</sup> . We will gather in the small meeting room on the east end. For any questions, please contact Heather Wilke at (231) 215-8593.

# Service Opportunities

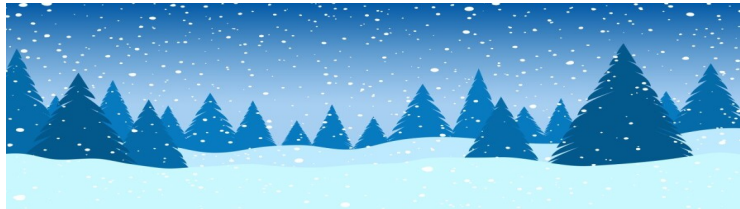
**Sacred Suds** Sacred Suds is an organization that helps the homeless. It offers showers, laundry, technology and housing by appointment. They are in need of many items and the list is on the table in the entryway. For any questions, please see Lois Cordle or call her at (231) 286-5700.  
**Books for Kids** We are asking for new or gently used children’s books to establish our “Books for Kids” lending library. The age groups are from early childhood to 10 years old. There is a collection bin in the entryway. For any questions, please see Deborah Groenveld or call her at (231) 206-0198.

# Volunteers

**1<sup>st</sup> Service Coffee Server:** Kathy Young  
**2<sup>nd</sup> Service Coffee Server:** Tina Dadd & Kristie Hall  
**1<sup>st</sup> Service Nursery:** Joann Petroski  
**2<sup>nd</sup> Service Nursery:** Tina Dadd & Janice Carrigan

# Order of Worship-9:00am

Gathering Song  
“Look What the Lord Has Done”  
Call to Worship  
“Jesus Is All the World to Me”  
Welcome & Announcements  
Congregational Prayer  
Worship in Song  
“I Need Thee Every Hour”  
“’Tis So Sweet to Trust in Jesus”  
Crosstalk - “Not Yet Perfect”  
Offering  
“Jesus Is Here”  
Benediction  
“Praise God From Whom All Blessings Flow”



# Order of Worship-11:00am

Gathering Song  
“Doxology”  
Call to Worship  
“The Lord’s Prayer”  
Welcome & Announcements  
Congregational Prayer  
Worship in Song  
“Gratitude”  
“Praise”  
Crosstalk - “Not Yet Perfect”  
Offering  
“Friend in Jesus”  
Benediction  
“God Be With You”